

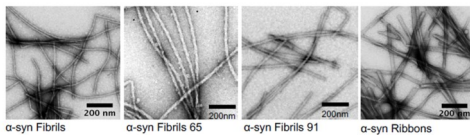
TransPathND

Intraneuronal transport-related pathways across neurodegenerative diseases

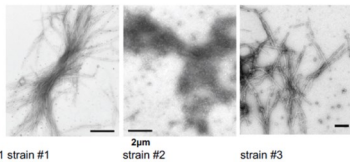
The overall goal of this project is to identify pathways/protein networks underlying the spread of distinct aggregates of A β 1-42, tau, α -synuclein or HTTexon 1 involved in Alzheimer's disease, Parkinson's disease, and Huntington's disease, respectively. The spread of lesions is a common feature of all of these diseases, but strikingly starts and progresses in different brain sub-regions for each pathology. According to recent observations, distinct aggregate conformers could be responsible for different clinical subtypes.

Here we aim to reveal the specific mechanisms by which distinct fibrillary protein polymorphs of A β 1-42, tau, α -synuclein and HTTexon 1 are taken up and transported by neurons. We will use different types of mouse neurons maintained in primary culture to establish a structure-function relationship for distinct pathogenic protein assemblies and their conformers by analyzing their binding, uptake and cellular trafficking after extracellular application.

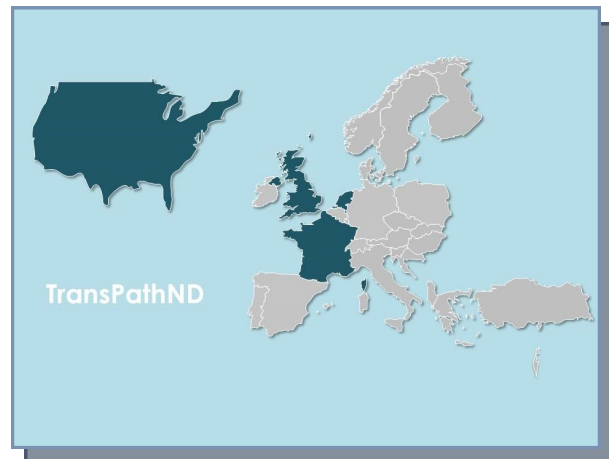
Our novel approaches, including (i) the preparation of fibrillary protein strains, (ii) the quantification of their intraneuronal transport, and (iii) the analysis of their interactomes by mass spectrometry and systems biology will drastically improve the chance of unraveling new mechanisms and will provide new targets for the development of specific treatment strategies.



Bouisset et al., 2013 Nat Commun
Mahky et al., 2016 Sci Rep



Trevino et al., 2012 J. Biol. Chem.
Monsellier et al., 2015 J. Biol. Chem.



Total Funding: € 1.29 million (approx.)

Duration: 3 years

Coordinator: Michel Simonneau
E: michel.simonneau@ens-paris-saclay.fr

Project Partners:




COORDINATOR | MICHEL SIMONNEAU

 **Michel Simonneau**, Laboratoire Aimé Cotton, ENS Paris-Saclay, Orsay, France

Ronald Melki, Paris-Saclay Institute of Neuroscience, CNRS, Gif-sur-Yvette, France

 **August B. Smit**, Center for Neurogenomics and Cognitive Research, VU University Amsterdam, Netherlands

 **Nicolas Le Novere**, Babraham Institute, Cambridge, United Kingdom

External collaborators (without funding)

 **Bin Zhang**, Icahn Institute of Genomics and Multiscale Biology, Icahn School of Medicine at Mount Sinai, NY, USA